

UNIT, DIRECT SUPPORT, AND GENERAL SUPPORT MAINTENANCE
REPAIR PARTS AND SPECIAL TOOLS LIST
TRUCK, 5-TON, 6X6, M809 SERIES TRUCKS (DIESEL)

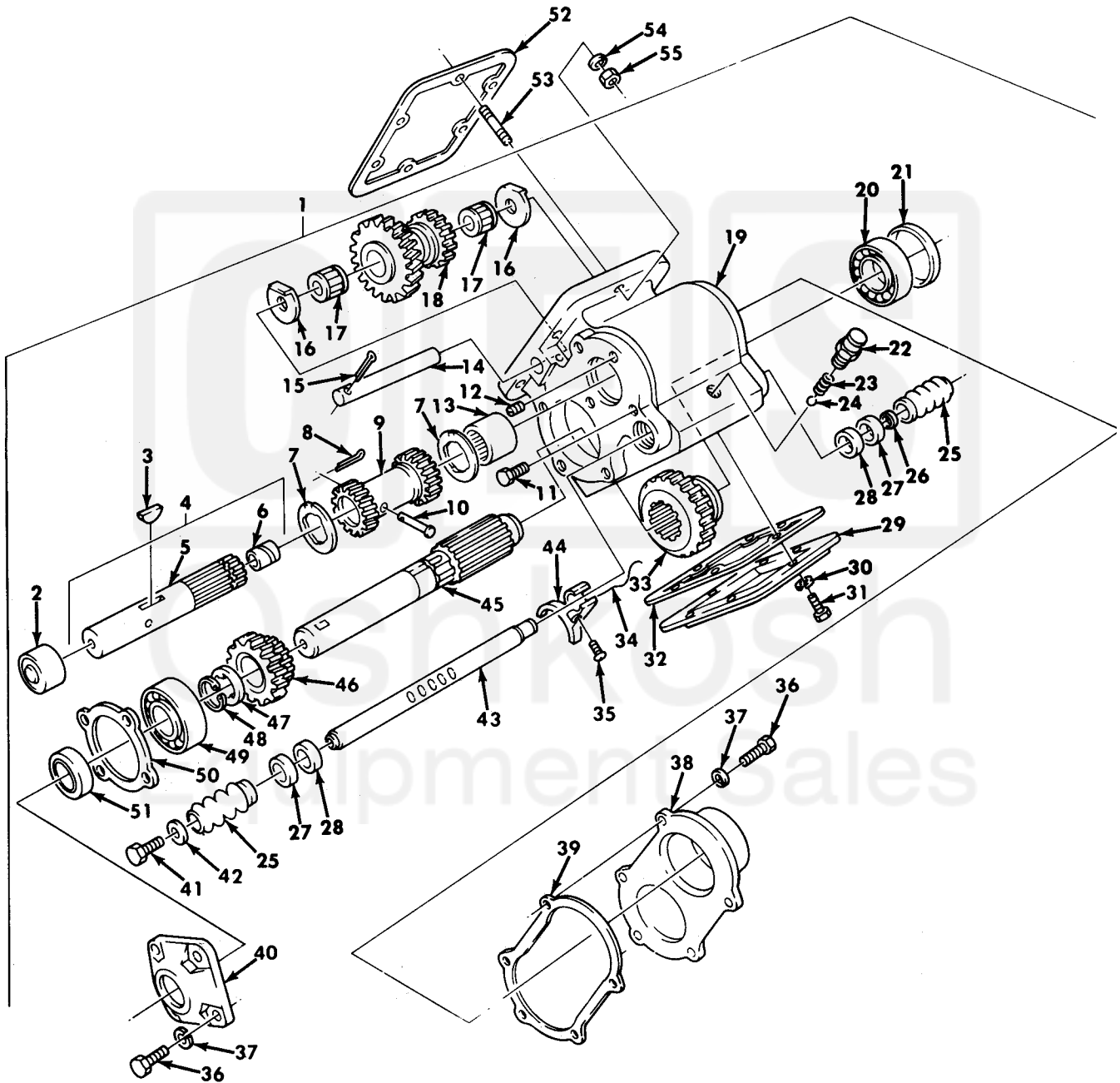


Figure 419. Transmission Power Takeoff Assembly and Mounting Hardware.

(1) ITEM NO	(2) SMR CODE	(3) NSN	(4) CAGEC	(5) PART NUMBER	(6) DESCRIPTION AND USABLE ON CODE (UOC)	(7) QTY
GROUP 2004 POWER TAKEOFF ASSEMBLY						
FIG. 419 TRANSMISSION POWER TAKEOFF ASSEMBLY AND MOUNTING HARDWARE						
1	PGFFH	2520-00-740-9588	19207	7409588	POWER TAKEOFF, TRANS. UOC: 614, 621, 622, 623, 625, 628, 634, 637	1
2	PAFZZ	3110-00-183-6723	96906	MS17131-35	. BEARING, ROLLER, NEED. UOC: 614, 621, 622, 623, 625, 628, 634, 637	1
3	PAFZZ	5315-00-058-8581	96906	MS35756-109	. KEY, WOODRUFF. UOC: 614, 621, 622, 623, 625, 628, 634, 637	1
4	PAFZZ	2520-00-740-9594	19207	7409594	. SHAFT REVERSE GEAR. UOC: 614, 621, 622, 623, 625, 628, 634, 637	1
5	XAFZZ		19207	10900574	. . SHAFT. UOC: 614, 621, 622, 623, 625, 628, 634, 637	1
6	PAFZZ	3120-00-737-3115	19207	7373115	. . BEARING, SLEEVE. UOC: 614, 621, 622, 623, 625, 628, 634, 637	1
7	PAFZZ	5310-00-706-1281	19207	7061281	. WASHER, THRUST. UOC: 614, 621, 622, 623, 625, 628, 634, 637	2
8	PAFZZ	5315-00-839-2326	96906	MS24665-281	. PIN, COTTER. UOC: 614, 621, 622, 623, 625, 628, 634, 637	1
9	PAFZZ	2520-00-740-9587	19207	7409587	. GEAR REVERSE SHAFT. UOC: 614, 621, 622, 623, 625, 628, 634, 637	1
10	PAFZZ	5315-01-208-5492	19207	8728251	. PIN, STRAIGHT, HEADED. UOC: 614, 621, 622, 623, 625, 628, 634, 637	1
11	PAFZZ	5306-00-226-4822	80204	B1821BH031C050N	. BOLT, MACHINE. UOC: 614, 621, 622, 623, 625, 628, 634, 637	2
12	PAFZZ	4730-00-018-9566	81348	WW-P-471ACABCA	. PLUG, PIPE. UOC: 614, 621, 622, 623, 625, 628, 634, 637	1
13	PAFZZ	3110-00-183-6723	96906	MS17131-35	. BEARING, ROLLER, NEED. UOC: 614, 621, 622, 623, 625, 628, 634, 637	1
14	PAFZZ	3040-00-706-1266	95019	9P21	. SHAFT, SHOULDERED. UOC: 614, 621, 622, 623, 625, 628, 634, 637	1
15	PAFZZ	5315-00-013-7258	96906	MS24665-497	. PIN, COTTER. UOC: 614, 621, 622, 623, 625, 628, 634, 637	1
16	PAFZZ	5310-00-753-8656	19207	7538656	. WASHER, KEY. UOC: 614, 621, 622, 623, 625, 628, 634, 637	2
17	PAFZZ	3110-00-227-3074	19207	7538658	. BEARING, ROLLER, JOUR. UOC: 614, 621, 622, 623, 625, 628, 634, 637	2
18	PAFZZ	3020-00-740-9586	19207	7409586	. GEAR CLUSTER. UOC: 614, 621, 622, 623, 625, 628, 634, 637	1
19	PAFZZ	2520-00-706-1160	19207	7061160	. CASE NAME PLATE. UOC: 614, 621, 622, 623, 625, 628, 634, 637	1
20	PAFZZ	3110-00-100-3119	60038	7000-80	. CONE AND ROLLERS, TA. UOC: 614, 621, 622, 623, 625, 628, 634, 637	1
21	PAFZZ	2520-00-706-1265	19207	7061265	. SPACER POWER TAKE O. UOC: 614, 621, 622, 623, 625, 628, 634, 637	1
22	PAFZZ	2520-00-104-4603	19207	5226140	. RETAINER, SHIFTER SH. UOC: 614, 621, 622, 623, 625, 628, 634, 637	1
23	PAFZZ	5360-00-692-6128	19207	8331558	. SPRING, HELICAL, COMP. UOC: 614, 621, 622, 623, 625, 628, 634, 637	1
24	PAFZZ	3110-00-100-6158	96906	MS19059-2422	. BALL, BEARING. UOC: 614, 621, 622, 623, 625, 628, 634, 637	1
25	PAFZZ	9390-00-706-1278	19207	7061278	. BELLOWS, PROTECTION. UOC: 614, 621, 622, 623, 625, 628, 634, 637	2
26	PAFZZ	5310-00-740-9595	19207	7409595	. WASHER, FLAT. UOC: 614, 621, 622, 623, 625, 628, 634, 637	1
27	PAFZZ	5330-00-737-6534	19207	7376534	. RETAINER, PACKING. UOC: 614, 621, 622, 623, 625, 628, 634, 637	2
28	PAFZZ	5330-01-143-1211	19207	7061272	. SEAL, PLAIN ENCASED. UOC: 614, 621, 622, 623, 625, 628, 634, 637	2
29	PAFZZ	5340-00-354-0771	19207	5323473	. COVER, ACCESS. UOC: 614, 621, 622, 623, 625, 628, 634, 637	1

(1) ITEM NO	(2) SMR CODE	(3) NSN	(4) CAGEC	(5) PART NUMBER	(6) DESCRIPTION AND USABLE ON CODE (UOC)	(7) QTY
30	PAFZZ	5310-00-627-6128	96906	MS35335-35	. WASHER, LOCK. UOC: 614, 621, 622, 623, 625, 628, 634, 637	6
31	PAFZZ	5305-00-144-1495	19207	10910354	. SCREW, MACHINE. UOC: 614, 621, 622, 623, 625, 628, 634, 637	6
32	PAFZZ	5330-00-234-3317	19207	8327322	. GASKET. UOC: 614, 621, 622, 623, 625, 628, 634, 637	1
33	PAFZZ	3020-00-318-0908	19207	7538671	. GEAR, SPUR. UOC: 614, 621, 622, 623, 625, 628, 634, 637	1
34	MFFZZ		96906	MS20995F41XAR	. WIRE, NONELECTRICAL MAKE FROM WIRE, P/N MS20995F41. UOC: 614, 621, 622, 623, 625, 628, 634, 637	1
35	PAFZZ	5306-00-404-0075	19207	8344155	. BOLT, MACHINE. UOC: 614, 621, 622, 623, 625, 628, 634, 637	1
36	PAFZZ	5306-00-225-8499	96906	MS90725-34	. BOLT, MACHINE. UOC: 614, 621, 622, 623, 625, 628, 634, 637	9
37	PAFZZ	5310-00-407-9566	96906	MS35338-45	. WASHER, LOCK. UOC: 614, 621, 622, 623, 625, 628, 634, 637	9
38	PAFZZ	2520-00-706-1269	19207	7061269	. CAP, END, POWER TAKEO. UOC: 614, 621, 622, 623, 625, 628, 634, 637	1
39	PAFZZ	5330-00-706-1270	19207	7061270	. GASKET. UOC: 614, 621, 622, 623, 625, 628, 634, 637	1
40	PAFZZ	4730-00-626-2467	56442	2394T2	. FLANGE, PIPE. UOC: 614, 621, 622, 623, 625, 628, 634, 637	1
41	PAFZZ	5305-00-269-3234	80204	B1821BH038F075N	. SCREW, CAP, HEXAGON H. UOC: 614, 621, 622, 623, 625, 628, 634, 637	1
42	PAFZZ	5310-00-080-6004	96906	MS27183-14	. WASHER, FLAT. UOC: 614, 621, 622, 623, 625, 628, 634, 637	1
43	PAFZZ	3040-00-740-9592	19207	7409592	. SHAFT, SHOULDERED. UOC: 614, 621, 622, 623, 625, 628, 634, 637	1
44	XDFZZ		19207	7061273	. SHIFTER FORK, NONVEH. UOC: 614, 621, 622, 623, 625, 628, 634, 637	1
45	PAFZZ	2520-00-740-9593	19207	7409593	. SHAFT OUTPUT. UOC: 614, 621, 622, 623, 625, 628, 634, 637	1
46	PAFZZ	3020-00-740-9585	19207	7409585	. GEAR CLUSTER. UOC: 614, 621, 622, 623, 625, 628, 634, 637	1
47	PAFZZ	3120-00-753-8661	19207	7538661	. BEARING, WASHER, THRU. UOC: 614, 621, 622, 623, 625, 628, 634, 637	1
48	PAFZZ	5325-01-163-5018	19207	7538660	. RING, RETAINING. UOC: 614, 621, 622, 623, 625, 628, 634, 637	1
49	PAFZZ	3110-00-555-7227	21450	714248	. BEARING, BALL, ANNULA. UOC: 614, 621, 622, 623, 625, 628, 634, 637	1
50	PAFZZ	5330-00-532-3606	19207	5323606	. GASKET. UOC: 614, 621, 622, 623, 625, 628, 634, 637	1
51	PAFZZ	5330-00-404-3210	19207	11640317	. SEAL, PLAIN ENCASED. UOC: 614, 621, 622, 623, 625, 628, 634, 637	1
52	PAFZZ	5330-00-234-3317	19207	8327322	. GASKET. UOC: 614, 621, 622, 623, 625, 628, 634, 637	1
53	PAFZZ	5307-00-011-3247	24617	113247	. STUD, PLAIN. UOC: 614, 621, 622, 623, 625, 628, 634, 637	6
54	PAFZZ	5310-00-637-9541	96906	MS35338-46	. WASHER, LOCK. UOC: 614, 621, 622, 623, 625, 628, 634, 637	6
55	PAFZZ	5310-00-732-0559	96906	MS51968-8	. NUT, PLAIN, HEXAGON. UOC: 614, 621, 622, 623, 625, 628, 634, 637	6

END OF FIGURE